



# INSTALLATION MANUAL FOR 1000KCS 1002KCS

# SAFETY CONCERNS

## WARNING: FAILURE TO FOLLOW THESE RULES MAY RESULT IN SERIOUS PERSONAL INJURY

- 1 Read instruction manual before operating the units.
- 2 Eye damage may result from directly viewing the light produced by these lamps. To reduce the risk of exposure to UV radiation, take UV-radiation protective measures for personnel during servicing.
- 3 This fixture is designed for use with germicidal UV-C lamps and must be installed in compliance with competent technical directions so that user's eyes and bare skin will not be subjected to injurious rays.
- 4 UV Light Hazard. To prevent exposure to ultraviolet light, be sure the ultraviolet air treatment system is disconnected before servicing any part of the HVAC system or removing any access panel or the equivalent.
- 5 There shall not be any openings in the duct that would emit light.
- 6 There shall not be any duct supply or return air openings or any other openings that are in direct line-of-sight of the UV bulb.
- 7 Check damaged parts: Before further use of the unit, any damaged part should be carefully checked to ensure that the unit will operate properly. Any part that is damaged should be properly repaired or replaced.
- 8 Always service unit with Second Wind replacement parts & recommended accessories (i.e. lamps, ballast).

## CAUTION:

- 1 Personal Injury Hazard. Power supply can cause electrical shock. Disconnect power supply before servicing or beginning installation.
- 2 Risk of exposure to excessive ultraviolet (UV) radiation—Do not operate without complete lamp enclosure in place or if sight lens is damaged.
- 3 Equipment Damage Hazard. Ultraviolet light can cause color shift or surface degradation and sometimes structural degradation of non-metallic components. Select mounting location that prevents exposure to plastic flexible duct components, polyurethane foam insulation material, rubber hoses, wire insulations, etc. If mounting options are limited, items above should be protected with ultraviolet resistant materials such as aluminum foil, aluminum duct tape, or metallic shields.

## INSTALLATION LOCATION:

1. See page 4 for possible installation locations.
2. Products shall be mounted only on to metal air ducts.
3. Mounting shall be such that all surfaces in the duct where appliance forms parts of the duct shall be made of metal.
4. All wiring within adjacent heating and air conditioning equipment, for example, shall be shaded from direct line-of-sight from the UV bulb or shall be UV-rated.

# CONTENTS

	PAGE
Safety & Installation Concerns	2
Contents & Unpacking	3
Installation Locations	4
Installation 1000 Series	5
Lamp Replacement	6
Troubleshooting & Service Parts	7
Warranty	8

# UNPACKING

Your new Second Wind Air Purifier is shipped complete in one container. Carefully unpack the unit and all loose items from the shipping container. Figs. 2 illustrate the unit and all loose items packed with the unit.

- 1 Unit
- 2 Warning Labels
- 3 Installation Manual
- 4 Metal template and mounting plate
- 5 Cord

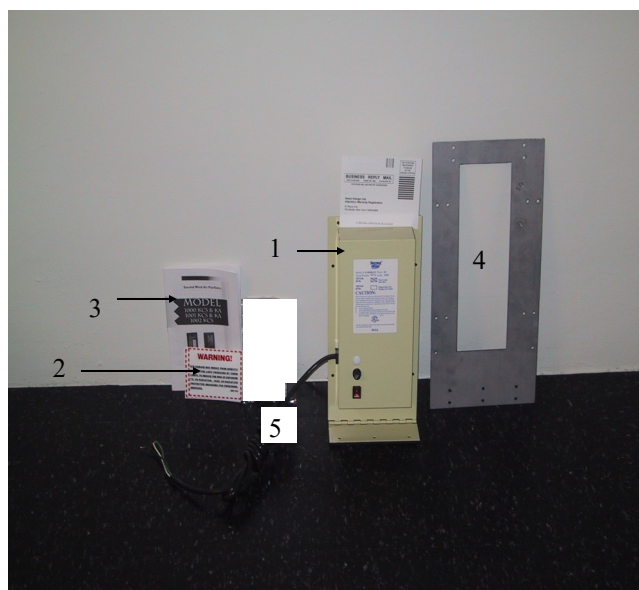


Fig.2

## POSSIBLE INSTALLATION LOCATIONS 1000KCS and 1002KCS

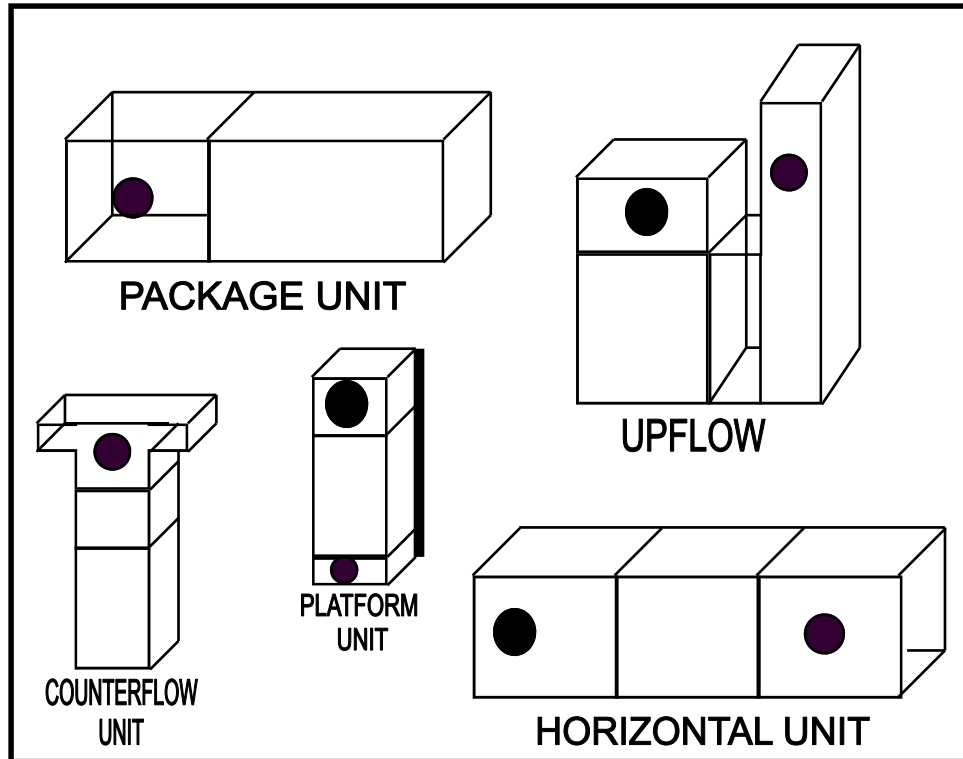


Fig.3

The Second Wind Air Purifier has been tested effective in the destruction and reduction of bacteria, viruses and fungus under various conditions. The effectiveness of this device may vary depending upon room area and rate of circulation.

**WARNING!!!**

**DO NOT LOOK AT THE ULTRA-VIOLET LIGHT**

**DO NOT OPERATE UNTIL IT IS INSTALLED IN THE RETURN OR SUPPLY.**

**IF NON-UV RESISTANT FILTER MEDIA IS PRESENT, INSTALL THE UNIT 36" AWAY**

**TO DETERMINE AN INSTALLATION LOCATION SEE: FIG.3**

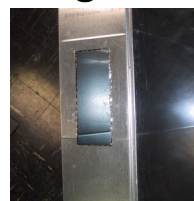
# Installation 1000KCS and 1002KCS

- Installation should be done by a qualified HVAC contractor.
- Read all safety instructions at the beginning of this manual.
- CAUTION: Equipment Damage Hazard. Ultraviolet light can cause color shift or surface degradation and sometimes-structural degradation of non-metallic components. Select mounting location that prevents exposure to plastic flexible duct components, polyurethane foam insulation material, rubber hoses, wire insulation, etc. If mounting options are limited, items should be protected with ultraviolet resistant material such as aluminum foil, aluminum duct tape, or metallic shields
- IF NON-UV RESITANT FILTER MEDIA IS PRESENT, INSTALL UNIT 36" AWAY

- 1 Use the metal template/mounting bracket to pencil out rectangle to cut out. (Fig.4)
- 2 Use the drill and a 1/2 inch drill bit to cut a hole along the inside of the marked circle. (Fig.5)
- 3 Use tinsnips to cut out the rectangle (Fig.6).
- 4 Make sure lamps on the 1000 series units are pointed in the direction of the airflow. There are arrows pointing to the direction the air must pass across the lamps. If not, remove the lamps from the brackets and turn them around.
- 5 Install mounting plate around opening in duct with zip screws. (Fig.7)
- 6 Use the self tapping sheet metal screws to secure the unit to mounting template. (Fig.8)
- 7 Make sure the power is off to the blower before wiring unit.
- 8 For the 1000KCS : With the switch in the off position, plug the unit directly into a 120 vac outlet. Turn the switch to the on position.
- 9 The 1002KCS air purifier is designed to turn on and off with the forced air blower. Wire the unit into the HVAC system to come on and off with the blower. If lamp is operating the sight glass will illuminate. If it is not see the troubleshooting section.



**Fig.5**



**Fig.6**



**Fig.7**



**Fig.8**



**Fig.4**

## TOOLS FOR INSTALLATION

- 1 Marker
- 2 Tinsnips
- 3 Drill
- 4 Drill Bits
- 5 5/16" & 11/32 "Nut driver
- 6 Tape Measure
- 7 Metal Template and Mounting Bracket

# Lamp Replacement

Second Wind Air Purifier lamps are designed to be on all the time. After approximately 9000-11000 hours of operation the lamps intensity will decrease. Installation of a replacement lamps is best handled by a HVAC Contractor. ***Both lamps must be replaced at the same time for the MODEL 1000KCS.***

- 1 Turn unit off and make sure the power is off to the unit.  
Wait for lamp to cool.
- 2 Remove screws from around the unit, do not remove the screws from the hinge. (Fig.13)
- 3 Drop unit down, it will remain attached to the duct via the hinge. (Fig.14)
- 4 Carefully remove lamp from brass lamp holders. (Fig.15)
- 5 Remove lamp connector from end of lamp. (Fig.16 & Fig.17)
- 6 Install new lamp into socket and snap into brass holders.
- 7 Return unit to upright position against duct and re-attach with screws.
- 8 Power unit up and turn on.

## NOTE :

UV Lamps contain mercury like other fluorescent lamps and must be disposed of properly. Do not throw old lamps in the trash. Contact your local waste collection agency for proper disposal procedures.

## \*\*\*\*\* ATTENTION \*\*\*\*\*

Units built prior to serial number 10260 use two (2) # 1068 lamps. Units built after to serial number 10260 use (1) 1068 & (1) 1068A lamp. Replace both at the same time.

If the lamps are dirty or have fingerprints on them, use alcohol to remove.

The 1000KCS purifier has two different lamps and unit is always powered ON.

1. 1-split lamp part # 1068
2. 1- straight lamp part # 1068A



Fig.13

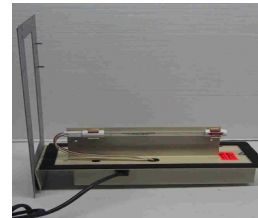


Fig.14



Fig.15



Fig.16



Fig.17

# TROUBLESHOOTING

- 1 Make sure that the unit is wired properly and is turned on.
- 2 Check the on/off switch to make sure it is on.
- 3 If the lamp is still not on, switch the unit off, disconnect power and check the fuse.
- 4 Make sure the lamp is not broken and that it is in the socket.
- 5 If the lamp is still not on, check the ballast .

## 1000KCS units

- 1 Make sure that the unit is wired or plugged into a 120 -277 vac feed that is always on.
- 2 Check the on/off switch to make sure it is on.
- 3 If the lamp is still not on, switch the unit off and check the fuse.
- 4 Make sure the lamp is not broken and that it is in the socket.
- 5 If the lamp is still not on the ballast of the 1000KCS unit is not working, call for replacement.

## 1002KCS

- For the 240 vac units 1002kcs the ballast resistance should be tested like before.  
**Disconnect power.** For the 240 vac ballast (#SS2060446) the resistance should be 14-25 ohms. If below 14 ohms replace the ballast.
- **If everything else has been checked and is fine, but the lamp is still out, the ballast starter is blown and the ballast should be replaced.**

## 1000KCS units

Built prior to serial number 10260

### **Lamp will not light**

Check power to outlet and unit.

Turn off unit and check fuse.

Turn off unit and open cover to check connection to lamp.

If all prior checks are OK check the ballast.

Measure the resistance of the ballast from the black to blue wire using an OHMS meter.

Turn unit off, open cover:

Ballast number SSGPH287P resistance should read 16—30 ohms, if below 16 replace the ballast.



**ATTENTION:** Replacement Lamps for Model 1000KCS with Serial # 10259 & down use 2—1068 Lamps, Serial # 10260 & up use 1-1068 and 1-1068A Lamp. **ALWAYS REPLACE BOTH LAMPS AT THE SAME TIME.**

## Replacement Parts

1	Ballast 240 vac (1002KCS)	1053
1	Ballast 120/277 vac	1651C
2	Interlock Switch	1050
3	On/Off Switch 120 V	1061
	On/Off switch 240 V	1057
4	Fuse Assembly	1054
5	Fuse	1055
6	Power Cord	1124
7	Lamp Connector	1014
8	9 “ Split Lamp 1000KCS	1068
9	9 “ Straight Lamp 1000KCS	1068A
	Serial 10260 & up, 1-1068 & 1-1068A	
10	Sight Glass	1078
11	18 “ Lamp 1002kcs	1067





### **ATTENTION INSTALLERS AND HOMEOWNERS**

**YOUR SECOND WIND PRODUCT MUST BE REGISTERED TO QUALIFY FOR WARRANTY CLAIMS  
SEE CONTAINER OR CALL 1-866-476-5101 (IN USA) OR 1-888-216-9184 (IN CANADA) FOR ASSISTANCE**

#### **SECOND WIND AIR PURIFIER WARRANTY**

The Second Wind 1000KCS or 1002KCS that is attached to your Heating, Ventilation and Air Conditioning System (HVAC) has the following warranty, applicable in USA by General Filters Inc (GFI), and in Canada by Canadian General Filters Limited (CGF)

#### **ONE (1) YEAR WARRANTY COVERAGE LAMPS**

The lamps are warranted for a period of one (1) year from the date of the original installation, when installed and operated in accordance with GFI and CGF recommendations. If during this period a lamp fails, GFI & CGF will provide a free replacement.

#### **FIVE (5) YEAR LIMITED WARRANTY**

GFI & CGF warrants this product, excluding lamps to be free from defects in the workmanship or materials, under normal use and service, for a period of five (5) years from the date of original installation, when installed and operated in accordance with GFI & CGF recommendations. If during this period a covered component fails, GFI & CGF will repair or replace the part.

#### **SHIPPING, REPAIRS AND ALL OTHER COSTS OF WARRANTY SERVICE**

End user must pay shipping charges and all other costs of warranty service. GFI & CGF will not pay labor involved in diagnostic calls or in removing, servicing, or replacing parts. All repairs of covered components must be made with authorized service parts. Labor charges resulting from diagnostic calls or service are not covered by this warranty.

#### **CARE OF EQUIPMENT**

Your new Second Wind Air Purifier must be properly installed, operated and maintained in accordance with the unit installation, operation, and maintenance instructions provided with each unit. Failure to provide maintenance per these instructions will void warranty.

#### **WARRANTY LIMITATIONS**

This warranty will be voided if the covered equipment (only Second Wind replacement parts or units are warranted) is removed from the original installation site. This warranty does not cover damage or defect resulting from:

- 1 Accident, or neglect or unreasonable use or operation of the equipment, including operation of electrical equipment at voltages other than the range specified on the unit name plate.
- 2 Modification, change or alteration of the equipment, except as directed by GFI & CGF The furnishings of replacement parts under terms of this warranty will apply to the original warranty period and will not extend the warranty.

GFI & CGF makes no express warranties other than the warranty specified above. All implied warranties, including the implied warranty of merchantability and fitness for a particular purpose, are limited to the duration of the warranty specified above. Liability for incidental and consequential damages is excluded and is not covered by this warranty. Some States do not allow limitations on the duration of an implied warranty or the exclusion or limitation of incidental or consequential damages, so the limitations or exclusions may not apply to you.

This warranty gives you specific legal rights, and you may also have other rights which vary from state to state.

General Filters Inc & Canadian General Filters Ltd shall not be liable for any default or delay in performance under this warranty caused by any contingency beyond their control.

#### **WARRANTY PROCEDURE**

All Second Wind Air Purification systems that are attached to your Heating, Ventilation and Air Conditioning System (HVAC) have a limited unit warranty. To receive warranty consideration, the following must be provided.

- 1 Be prepared to furnish the following information:
  - a- Complete model number and serial number
  - b- Proof of installation date if warranty claim is made by other than a qualified service dealer who maintains records of your installation date and service history.
  - c- An accurate description of the problem.
  - d- Date of failure.
- 2 Call the installing dealer that you purchased your Second Wind device from.
- 3 If the installing dealer is unable to provide warranty parts, contact:

General Filters Inc,  
43800 Grand River Ave  
Novi, MI 48375  
Phone: 1-866-476-5101

CGF Products Ltd.  
400 Midwest Road  
Toronto, ON M1P3A9  
Phone: 1-888-216-9184

Email: [service@secondwindairpurifier.com](mailto:service@secondwindairpurifier.com)